

B mon
S.R.O.





CONTENT :

- 1. ABOUT 3MON 3
- 2. FIREFIGHTING EQUIPMENT 5
- 3. SHELTER BUILDINGS 5
- 4. GINA SYSTEM 7
- 5. OIL RESIST 11
- 6. DRONES 12

ABOUT COMPANY:

Please allow me to introduce 3MON s.r.o., an industry leader in comprehensive safety services and the provision of equipment for rescue services.


We have a long history of collaborating with various fire rescue services and the armed forces. We are glad to provide rescue services with the equipment and tools they need to go about their work more efficiently – and save more lives in the process.

Since its founding in 2011, **3MON s.r.o.** has specialized in several different areas. We have extensive experience in providing equipment that assists in extinguishing forest fires.

We supply fire departments with several types of water tanks designed to transport water via helicopter (i.e., the Bambi Bucket), as well as other types of portable water tanks, such as the Fireflex model.

As firefighters often remain on the ground for several days and must always function at 100% in extremely difficult conditions, we also provide fully-equipped portable residential units, which offer a full range of services no matter where they are located.





3MON, delivers special shelter buildings of various types with technology for military and civilian purposes. Construction of shelters in the following applications:

- **Telecommunication purposes,**
- **Standby electric power supply,**
- **Command and control workstations,**
- **Mobile Offices,**
- **Mobile Workshops,**
- **Rescue Workshops.**

We are also a supplier of the GINA geographic monitoring system, a system that helps responding units correctly orient themselves on all terrain while their commander tracks and coordinates their movements in real time. The system serves as a support tool for coordinated intervention in an emergency situation, including strategic planning and communication with individual responders. GINA is currently used by organizations such as the European Space Agency, United Nations Development Program, Police of the Czech Republic, Firefighters intervention system (used in different regions of the Czech Republic and Slova), JmK Emergency Medical Service, and JRC European Commission.

3MON s.r.o. has recently expanded the company's portfolio of tactical clothing for firefighters and members of the armed forces. All clothing is highly functional and sewn from the highest-quality materials, so its wearers are

afforded as much protection as possible when they're on the job. We are also dedicated to offering rappelling and survival courses that teach the skills needed to effectively fight forest fires. These educational activities are intended mainly for rescue teams, outdoor enthusiasts, and people who frequently spend time in the outdoors.

All of our events take place in nature, where our clients learn how to "survive" – to get by without modern technology, navigating only by a map and the stars. Each course is tailored to the specific needs of our clients, and we include a paramedic in all of our activities in case of accident.

If you are interested in cooperating with our company, please feel free to contact us. We would gladly arrange a meeting in person to present you with more information on our areas of specialization. The majority of our employees are able to fluently communicate in English, German, Slovak, and Czech. We are at your disposition via telephone, email, and in person, as you prefer.

We look forward to cooperate with you.

The team of 3MON, s.r.o.

FIREFIGHTING EQUIPMENT

We are specialist for Aerial Firefighting with Bambi Bucket Systems and Fireflex Ground Fire Fighting Products. The firefithers also need the others equipmnet.

- Bambi Bucket
- FIREFLEX
- Remote Site Fuel/Water Logistics
- Fire Ignition Products
- Military Fuel and Water Systems
- Fire Hoses
- Foams
- Tools for Firefighters



SHELTER BUILDINGS



3MON, s.r.o. designs and delivers special shelter buildings of various types with technology for military and civilian purposes.

Construction of shelters in the following applications:

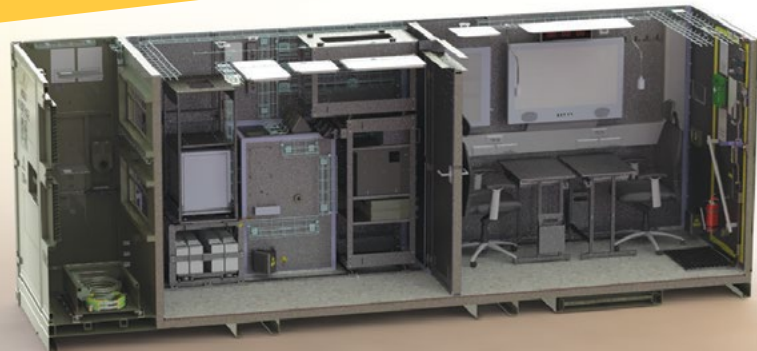
- Telecommunication purposes,
- Standby electric power supply,
- Command and control workstations,
- Mobile Offices,
- Mobile Workshops,
- Rescue Workshops.

Shelters may be equipped with:

- EMI/EMC protection,
- Electric generator, UPS and electrical installation,
- Air-conditioning,
- Sanitary conveniences,
- Security and fire protection systems,
- Communication and control equipment,
- Other equipment in accordance with customer requirements.



Standard shelters are supplied in the lengths of 20', 30' and 40', but they can be made also in other sizes on request of a customer. Shelters can be supplied with a carrier or container trailer; therefore we are capable to deliver complete and compatible system.



Indications and dimensions of shelters

Width	Height (mm)				Load (lb)
12	1A	1AA	1AAA	1AX	67 200
9	1B	1BB	1BBB	1BX	56 000
6	1C	1CC	-	1CX	52 900
3	1D	-	-	1DX	22 400
	2 438 mm	2 591mm	2 896 mm	2 438 mm	

GINA PC Central

Software for mission control

Mapping software for visual control of the situation in real-time. Based on a collaborative map it allows interactions with other teammates in the terrain and enables administration of the mission critical datasets. This powerful combination of an interactive map, GPS tracking and effective communication increases staff safety and security, minimizes costs and reduces paperwork.



MAPPING

- Rich map portfolio (customisable maps, offline maps)
- Multimedia information sharing through the map
- Real-time synchronised tactical drawings (points, lines, polygons)
- Practical use of pictograms
- Geo-fencing: active zones, border crossing alerts
- Data import/export in various formats (KML, GeoJSON, Shapefile)
- Use of bitmap items (stamps)

DATA COLLECTION AND ANALYSIS

- Various forms supported
- Real-time synchronised – information appears directly on the map
- Possibility to filter and sort data
- Automated reports
- Runs on mobile devices (with GPS, 3G module and camera)
- Search engine (addresses, GPS coordinates, user names)
- Integration with other data management tools
- Fully encrypted local storage



FLEET MANAGEMENT

- Real-time visibility of unlimited number of units/groups
- Unit status: position, speed, battery, distance
- Various types of GSM and satellite tracking devices (e.g. InReach, Spot) can be displayed at the same time
- Last known location (in case of connection loss or when switched off)
- Quick user search
- Navigation using waypoints, route assessment
- Route risk analysis (based on current and historical data)
- Geo-fencing: active zones, border crossing alerts

STAFF SAFETY AND SECURITY

- Real-time visibility of users
- Automated alerts and reactions on SOS calls (visual and sound notification, SMS and e-mails)
- Automated calls to predefined numbers
- Various types of GSM and satellite tracking devices (e.g. InReach, Spot) can be displayed at the same time
- Alerts when entering restricted zones
- Safe corridors management
- Evacuation plan/warden system tools
- Last known location (in case of connection loss or when switched off)
- Concept of the operations (CONOPS) features

PROJECT MANAGEMENT

- Possibility to monitor several situation simultaneously (independent map views with their proper parameters)
- Search engine (addresses, GPS coordinates, user names)
- Messaging (broadcast, group/private messages)
- Task management
- Predefined scenarios
- Access rights administration

REPORTING

- Access to history via interactive timeline
- Data filters (pictogram/text/time period)
- Creation of heat maps
- Track reports (user track, group track)
- Customisable reports for individuals/teams or incidents
- Data visualisation in tables and charts
- Daily/flash reports automatically sent to predefined clients

GINA Tablet

Software for first responders

GINA Tablet is a smart application designed to help firefighters and emergency rescue workers in the terrain.

The system communicates with the operation centre and provides commanders with various management and decision support tools during all phases of the intervention.

Thanks to its complex functionality and various configuration modes GINA Tablet can be easily adapted to other fields.



- Shared operational situation (real-time visibility of units, tactical drawings)
- Dispatch lists
- Navigation to the scene
- Offline and online maps
- Data storage
- Status management
- Additional data layers (hydrants, POIs, etc.)
- Access to external apps (hazmat, extrication zones)

GINA Messenger

Software for field specialists

Smart application designed for coordination of staff in the field via real-time interactive map. GINA Messenger allows users to collect and display tactical data (active zones, POIs, navigation, waypoints), share their location, use various modes (incognito, SOS, etc.), create incident reports and communicate with each other (group messaging, photos). Thanks to safety features users are warned in case of imminent danger or emergency.



GINA HEMS

Software for helicopter emergency medical services

GINA HEMS application is developed for specific needs of the aerial rescue services. The application receives dispatch lists, navigates to the scene and sends statuses in every step of the intervention. The system offers an easy access to various maps, POIs, weather conditions and other useful information such as the location of the closest hospital.

FEATURES

- Receiving events, navigation, statuses
- Knowledge of the direction and distance, flight time
- Offline and online detailed maps, POI
- Offline search (local names, addresses, rocks)
- Image and text communication with the intervening units
- For iPad and iPad Mini (aviation certified)



OIL RESIST

is 100% hydrophobic environmentally material with a very fine cc 5 micron particles and can bind and cover particles of a different size. The adsorbent could be used as:



Fires can occur outside organic and inorganic substrates. This means that fires can burn the roots of healthy trees that are not covered with soil. Underground fires spread slowly under the soil through burning channels. To put out fires, I will use FIRE OIL RESIST. This product is a 100% organic powdered sorbent that can safely remain in nature after it's been used. It naturally degrades and is neutralized in the soil. Its fine grain size of 5 microns allows for the simple disposal of contaminants from solid surfaces!

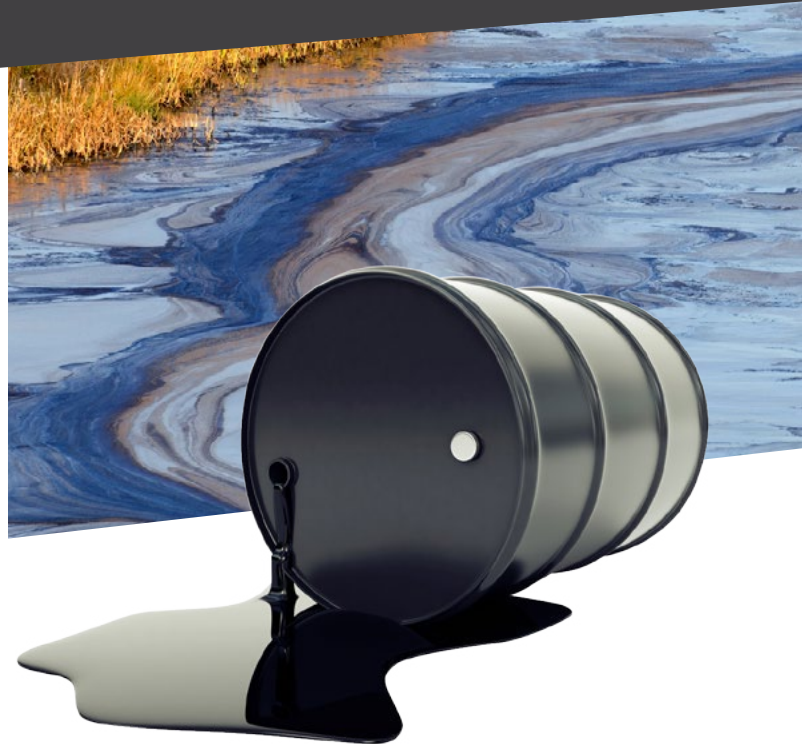


In the case of an oil spill with oil forming on the surface of the water, **WATER OIL RESIST** absorbs contaminants and increases its volume, rising to the surface when it's fully saturated. The water naturally passes through this photosynthetic system because of the oxygen present in the water, creating a clear path to the surface.

Through special technology, it is even possible to utilize the powder after absorption as a heating material.

Usage:

- Cleaning bodies and levels of water
- Neutralization of pH in highly acidic water



ROAD OIL RESIST allows the disposal of petroleum derivatives and vegetable and mineral oils from hard surfaces. Contaminates on the road can be completely removed without leaving any dangerous substances behind. The sorbent is highly hydrophobic and traps all of the oil derivatives within itself. It can be used for removing oil stains on roads, gas stations, airports and railways, as well as for removing the contaminants left behind after road accidents.

ROBODRONE

KINGFISHER

Maximum 5kg payload and up to 45 minutes endurance. The vehicle is primarily designed for video imaging, including day and night monitoring of industrial facilities and other property that is not covered by security cameras. The configuration may include various sensors for remote survey.



STRIX

Maximum 15kg payload and approx. 30 minutes. endurance. The vehicle is ready to carry a broad range of sensors, cameras and data transmission modules. The modular concept of the vehicle allows for transportation containers, multispectral sensors or robotic arm for tools and material handling.

CERTIFIED ACCESSORIES

Robodrones can be equipped with a broad range of payloads, such as cameras, special sensors like radiation detection, thermal imaging, or multispectral cameras. Your imagination is the limit, we can fit any device you chose.

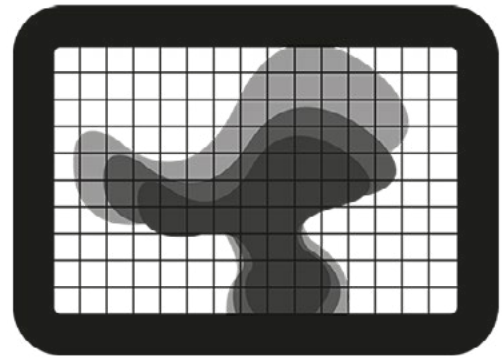
GROUND STATION

Robodrone groundstation features a durable frame and a LCD screen. The groundstation is configured to receive sensor and telemetry data, camera or FPV video. The downlink is highly secure due to the automated antenna diversity.



INFRA AND THERMAL IMAGER

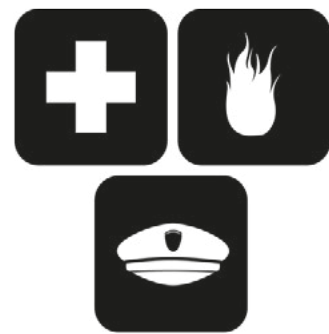
A thermal imaging camera captures the thermal radiation of objects or bodies which is not visible to the human eye. Inspections with a thermal imaging camera help detect structural changes, prevent losses and save energy. The inspection of industrial facilities is typically complicated by inaccessibility or height and usually industrial climbers or cranes are used to perform the tasks.



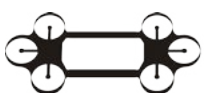
Robodrones are optionally equipped with thermal and infracamera enclosed in a compact turret.

RESCUE AND SECURITY

Search for missing persons, situational awareness, mission planning and team coordination. The remotely controlled Robodrone can transmit a live image to the operations center for immediate assessment of the situation and to support decision and planning purposes. The high resolution photos and videos provide valuable evidence for real-time and subsequent scene analysis. Robodrones offer a risk-free approach in case of fire, gas, explosion threat, floods, etc. and do not interfere with the operation thanks to their low noise footprint. They may be equipped with an optical, infrared and a thermal camera - all integrated in a single compact turret to do reconnaissance of the firegrounds in terms flame spread or source of the fire.



Day and night monitoring of critical situations, transportation hubs, objects, target areas or routes. Robodrones meet the requirements for continuous monitoring of the target area and high accuracy of objects or people positioning. In the case of extensive land or building surveillance requirements Robodrones may track areas not monitored by security cameras.



Robodrone

GEO-MAPPING



Robodrone groundstation features a durable frame and a LCD screen. The groundstation is configured to receive sensor and telemetry data, camera or FPV video. The downlink is highly secure due to the automated antenna diversity.





3MON, s. r.o.

Černyševského 10
851 01 Bratislava
Slovakia

Mobil: +421 918 641 394
e-mail: info@3mon.sk
web: www.3mon.sk